

Configuring RealOne with SatDirect

Problem: When trying to stream with RealOne Media Player, the download is coming through the dial-up connection. How do I stream using the satellite connection?

RealOne is a popular MP3/media player. Because SatDirect is a proxy client, the proxy configuration in RealOne will need to be modified for streams to come through the satellite. **NOTE: This document shows how to configure the latest version of RealOne, version 2.0. You can download this version at the RealOne site, www.real.com**

Troubleshooting Step 1 : Inserting the Proxy Settings into RealOne

- A. Open your RealOne media player. You should see a screen similar to Figure 1-1.



Figure 1-1

- B. Click on Tools, Preferences. You should see a screen similar to Figure 1-2.

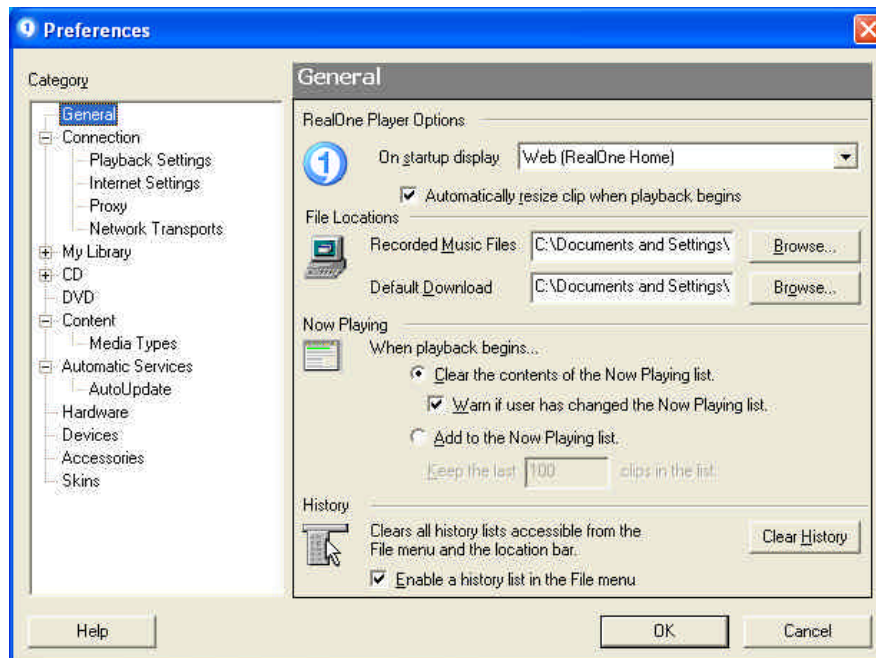


Figure 1-2

- C. On the left side of the screen, click on **PROXY**, underneath **CONNECTION**. You should now see a screen similar to Figure 1-3.

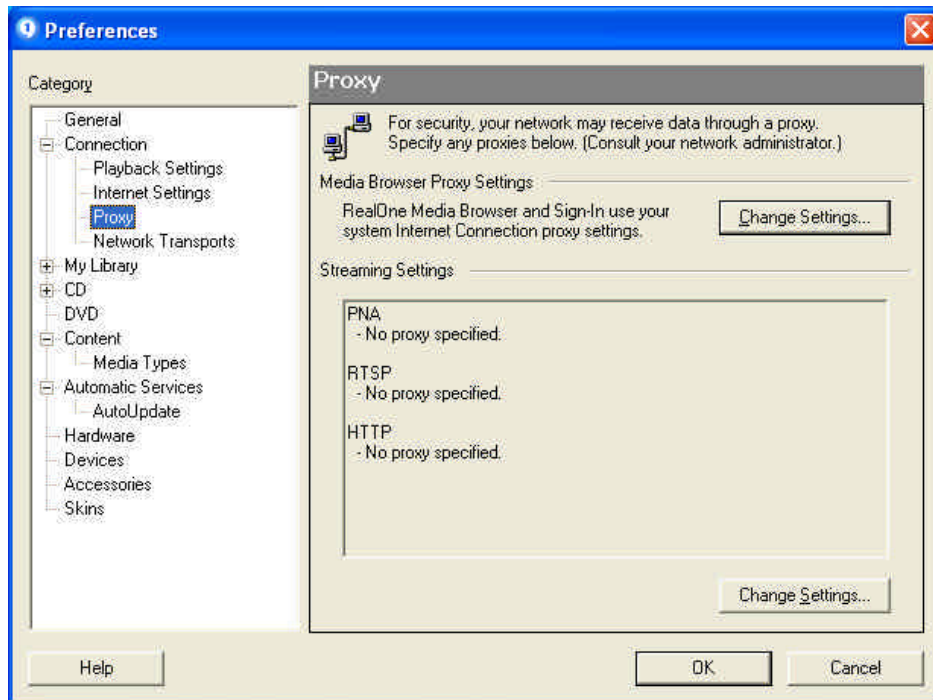


Figure 1-3

- D. Underneath the **STREAMING SETTINGS** section, click on the **CHANGE SETTINGS** button. You will see the screen shown in Figure 1-4.

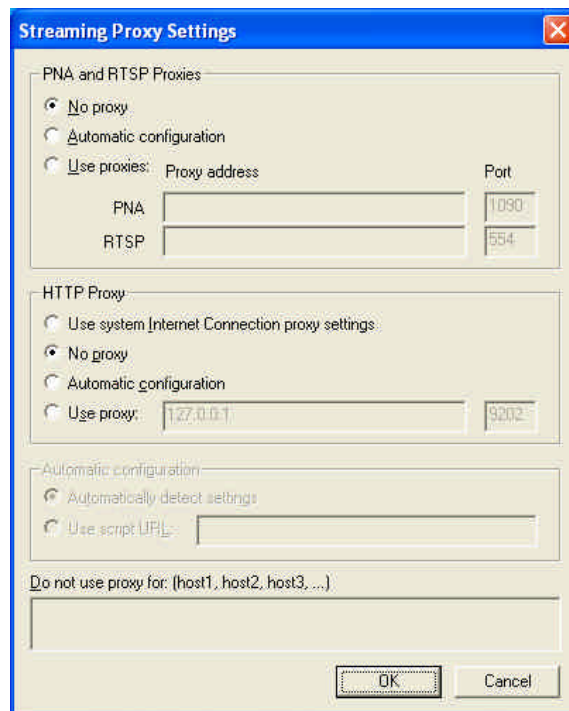


Figure 1-4

- E. Under the **HTTP PROXY** section, specify “Use Proxy”. If not already entered, type **127.0.0.1** in the first field, and type **9202** in the far left field. Your screen should look like Figure 1-5.

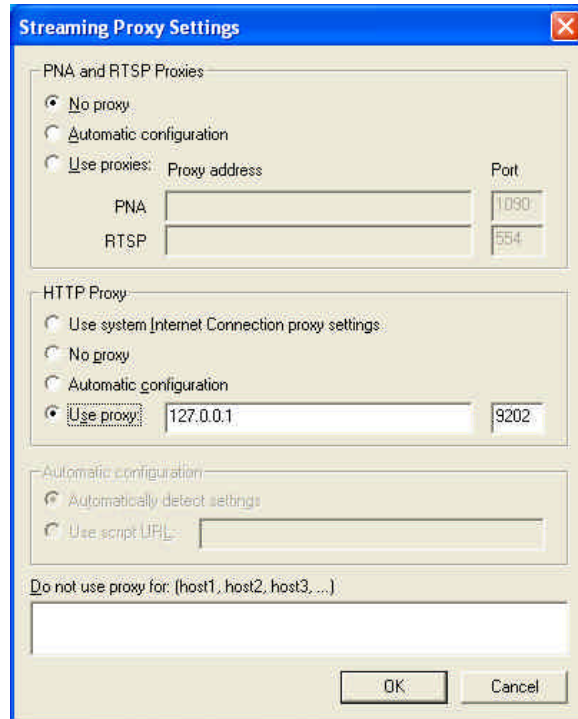


Figure 1-5

- F. Click **OK**, then **OK** again.

Your RealOne Media player is now configured to stream through the SatDirect proxy.