


## **SATDIRECT INSTALLATION**

If you are trying to install the SatDirect program, and already have the Setup4PC program installed on your computer, with the green satellite icon , on the lower right hand side of your computer, this document will guide you through the process.

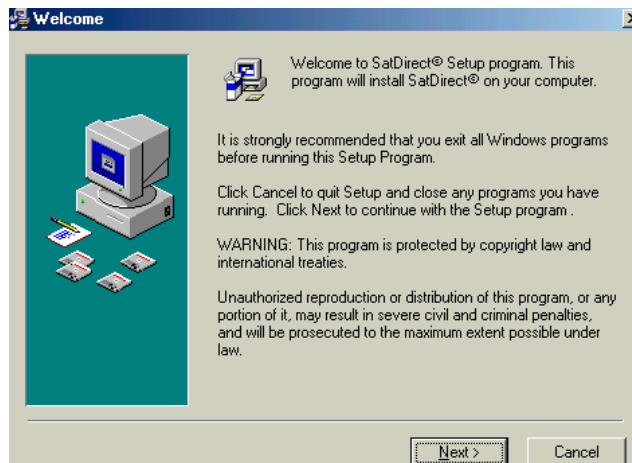
### **Step 1: DOWNLOADING AND INSTALLING SATDIRECT**

1. The first step that will be necessary to install the SatDirect program on your computer will be to download the SatDirect program from the tech support section of [www.isatplatform.com](http://www.isatplatform.com). MAKE SURE THAT YOU INSTALL THE RIGHT SATDIRECT PROGRAM FOR YOUR SYSTEM. THERE ARE TWO VERSIONS OF SATDIRECT ON THE WEBSITE, ONE FOR AMC 6 AND THE OTHER FOR SATMEX5. ONCE DOWNLOADED TO YOUR COMPUTER DECOMPRES THE SATDIRECT PROGRAM WITH EITHER WINZIP OR IF YOU HAVE WINDOWS XP THE WINDOWS COMPRESSION TOOL.
2. Once the file has been decompressed, the executable shown in Figure 1-1.



**Figure 1-1**

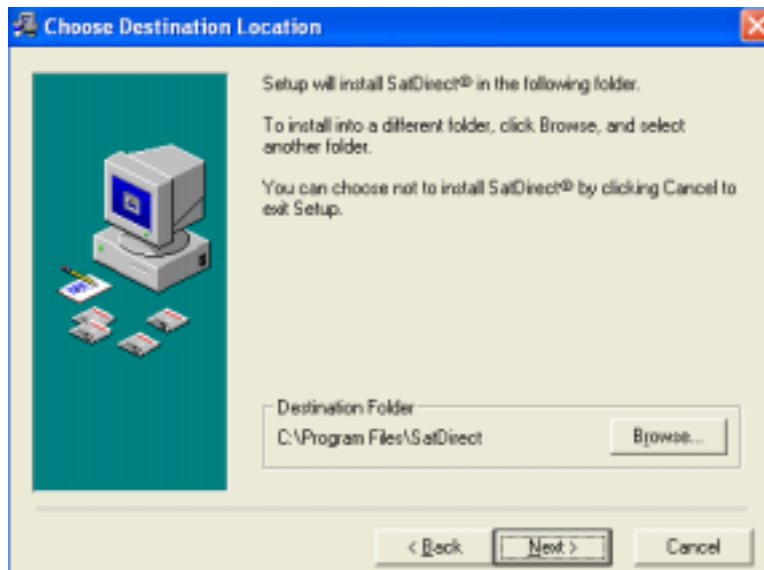
Double-Click on the SatDirect executable. The screen that will appear is shown in Figure 1-2. Click the **Next** button to continue.



**Figure 1-2**

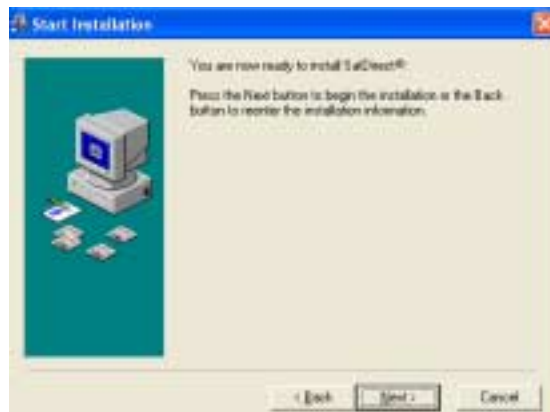
---

3. The Choose Destination Location window will appear as shown in Figure 1-3. Click the **Next** button



**Figure 1-3**

4. The window confirming the Start of the program installation will appear as shown in Figure 1-4. Click **Next** to begin the installation process.



**Figure 1-4**

---

5. The program will then install onto the computer. Once the program has finished installing the window will appear as shown in Figure 1-5.

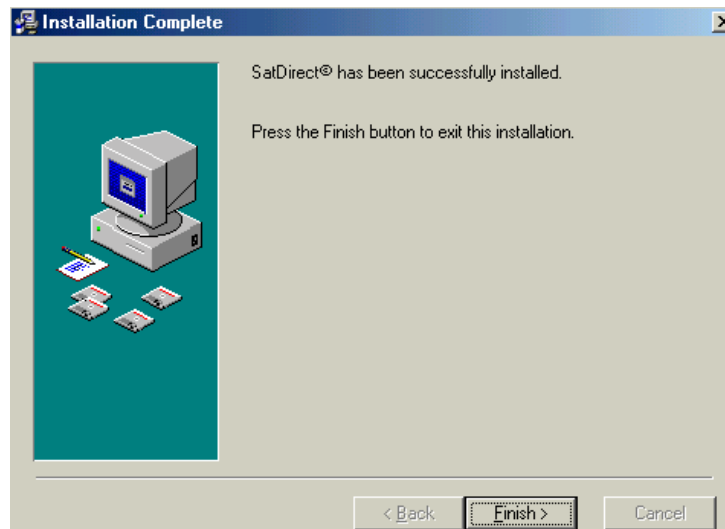



Figure 1-5

**Restart the computer to complete the installation process**

### NOTICE

If the computer is restarted and the SatDirect icon  does not appear, or if it appears with a yellow box surrounding it, the problem lies in the fact that the B2C2 Satellite Receiver has the wrong IP address. To change the IP address, go to the Network properties for the satellite card, and change the IP address to 172.16.238.238. The subnet mask will be 255.255.255.0. Once all the changes have been made to the IP properties, the Network properties window for the B2C2 Satellite receiver will look exactly like that of Figure 1-6.

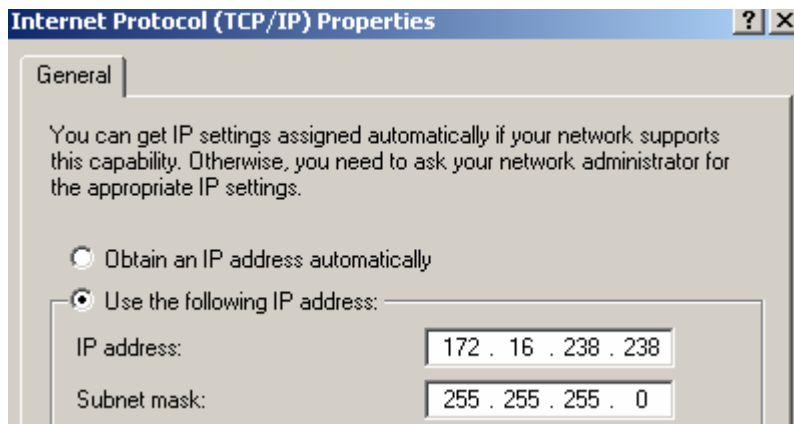


Figure 1-6

---

The gateway and DNS IP addresses are to be left blank. After this has been done save the configuration changes. Verify that the address of 172.16.238.238 match the IP address of the Satellite Adapter Address inside the SatDirect Config program which is inside the SatDirect subdirectory. The SatDirect Config program should appear as seen below in Figure 1-7.

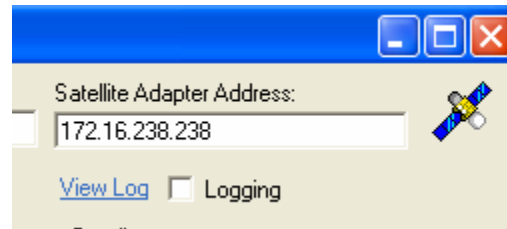


Figure 1-7

## Step 2: Modifying Internet Explorer 6.0 Settings

SatDirect is a client enabled proxy program that is used to connect to the satellite for the download transmission of high speed, broadband data. These steps establish the proxy settings on the Internet Explorer Browser to enable the SatDirect program.

1. Open an Internet Explorer session (if necessary, click **Stop** to allow easy access to the pull down tabs); choose **Tools** → **Internet Options**, as shown in Figure 2-1.

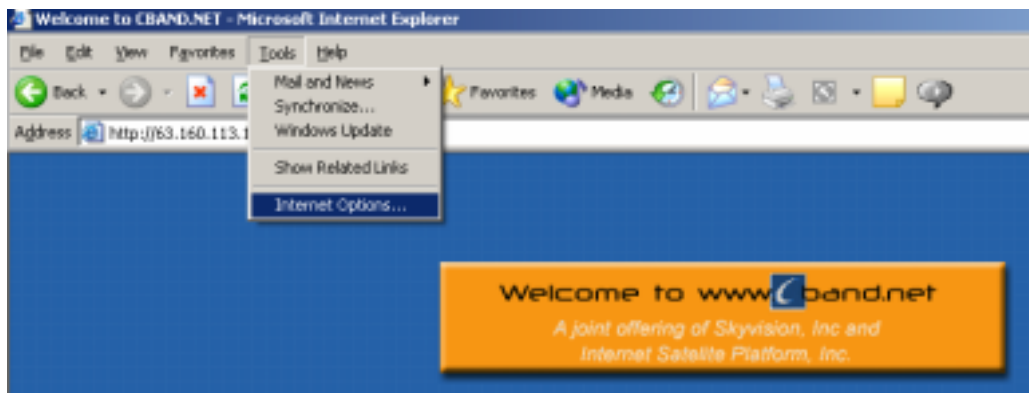


Figure 2-1

2. This will open the **Internet Options** window, as shown atop the next page in Figure 2-2.

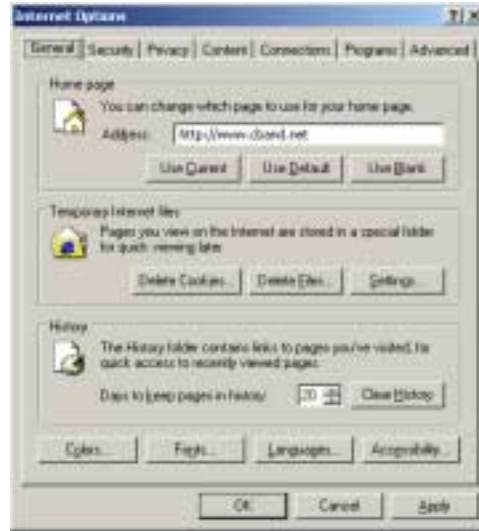


Figure 2-2

3. Choose the **Connections** tab. The window will look like Figure 2-3



Figure 2-3

4. Under **Dial-up and Virtual Private Networking settings**, highlight, with a left-click, the dial-Up connection that will be used with the satellite broadband service. Left-click on the **Settings** button. Once inside the dial up settings, check the box that says **Use a proxy server for this connection (These settings will not apply to other connections)** as shown in Figure 2-4. Click on the **Advanced...** button.



**Figure 2-4**

5. Once inside the Advanced Tab, enter in the following settings as shown in Figure 2-5.

**HTTP: 127.0.0.1 Port: 9202**  
**Secure: 127.0.0.1 Port: 9202**  
**Socks: 127.0.0.1 Port: 9203**



**Figure 2-5**

5. Click the OK button, and exit out of the dialer settings.

Restart the computer.

---

### Step 3: Activating SatDirect

1. Once the computer has been restarted, the green satellite SatDirect icon will appear in the lower right hand corner of the desktop. To logon to the satellite broadband service right click on SatDirect icon on the lower right hand corner and click on the login option as shown in Figure 3-1 on the next page. **NOTE: IF THE SATDIRECT ICON APPEARS YELLOW, GO TO THE TROUBLESHOOTING YELLOW SATETTLITE ICON DOCUMENT INSIDE THE [WWW.ISATPLATFORM.COM](http://www.isatplatform.com) TECH SUPPORT SECTION.**

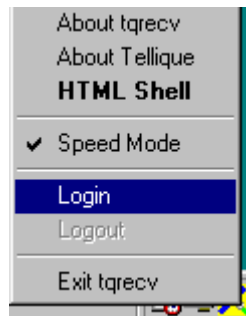


Figure 3-1

2. Click on the login option, as shown above, the login webpage will come up as shown below in Figure 3-2.



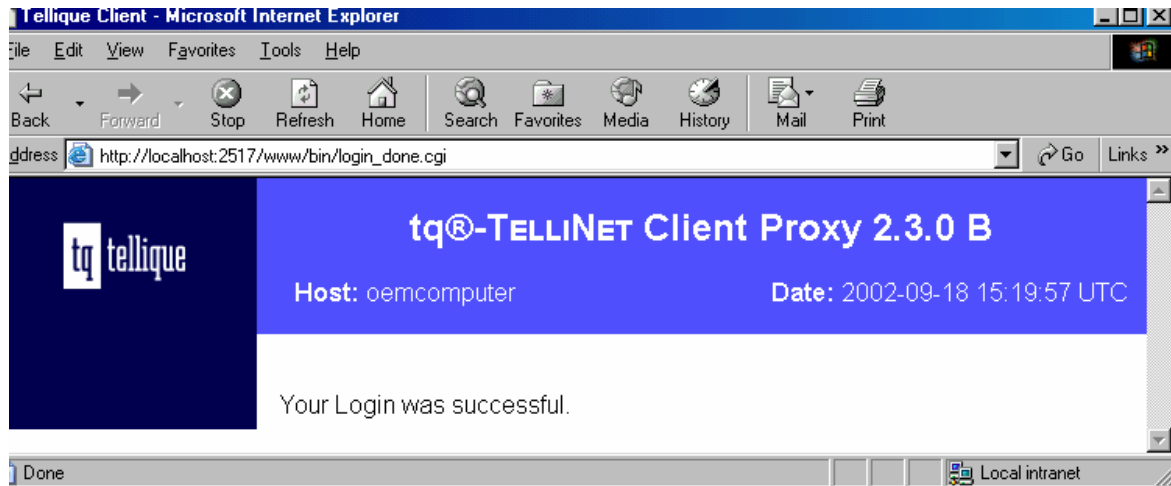
Figure 3-2

3. From this point simply enter the assigned username and password, and click the Login button. If you are able to connect to the SatDirect servers, and authenticate, you will see authentication page, as seen below in Figure 3-3.

---

## SatDirect Installation

---



**Figure 3-3**

If the 'Remember Password' box is checked, after a single successful login it is not necessary to logout or login of SatDirect, unless the satellite modem or the SatDirect user id or password are changed. This means that all that would need to be done is that the next time the dial-up connection is established, there is no need to login.