

Configuring Trillian with SatDirect

Problem: When trying to connect to Trillian, the download is coming through the dial-up connection. How do I connect using the satellite connection?

Trillian is a popular “all in one” instant messenger program. Because SatDirect is a proxy client, the proxy configuration in Trillian will need to be modified for connections to come through the satellite. **NOTE: This document shows how to configure the latest free version of Trillian, version 7.4. You can download this version at the Trillian site, www.trillian.cc.**

Inserting the Proxy Settings into Trillian

- A. Open your Trillian software. You should see a screen similar to Figure 1-1.

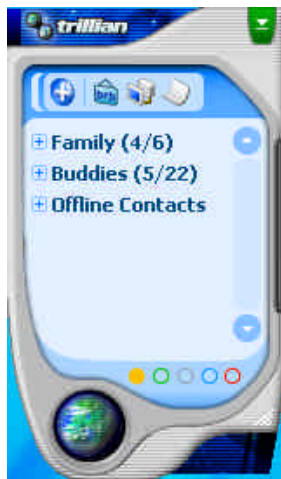


Figure 1-1

- B. Click on the “Earth” icon in the bottom left corner of the window, and then click on Preferences. To get there, you should see a window similar to Figure 1-2.



Figure 1-2

- C. At the Preferences screen (as shown in Figure 1-3), on the left hand navigation menu, click on "Proxy". You should then see a screen as shown in Figure 1-4.



Figure 1-3

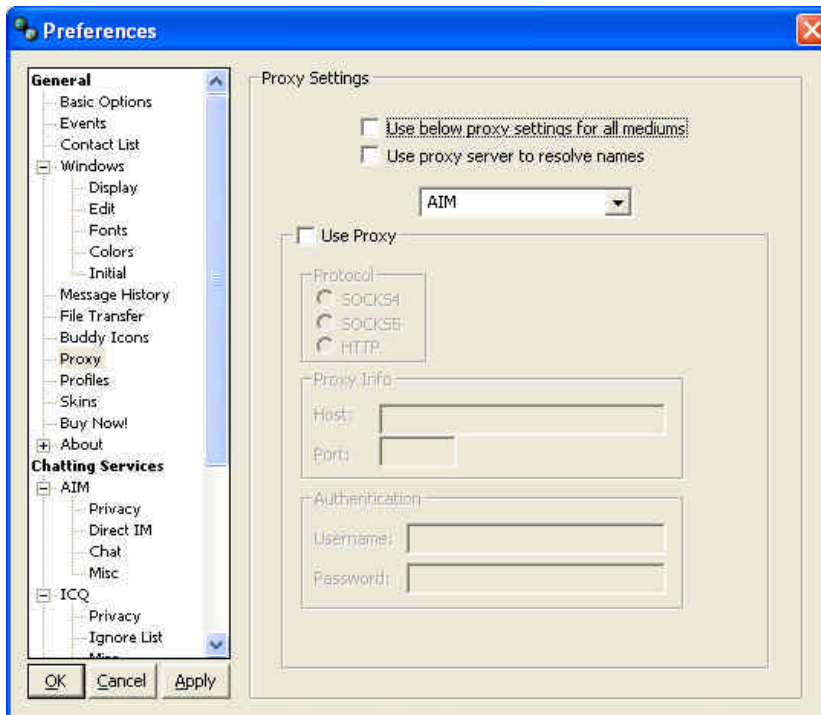


Figure 1-4

- D. On the right hand side of the screen, place a check in “**Use below proxy settings for all mediums,**” and place another check in “**Use Proxy.**”

Under “**Protocol,**” specify “**HTTP.**”

Under “**Proxy Info,**” next to **HOST,** type in **127.0.0.1.** Next to **PORT ,** type in **9202.**

Your screen should now look like Figure 1-5.

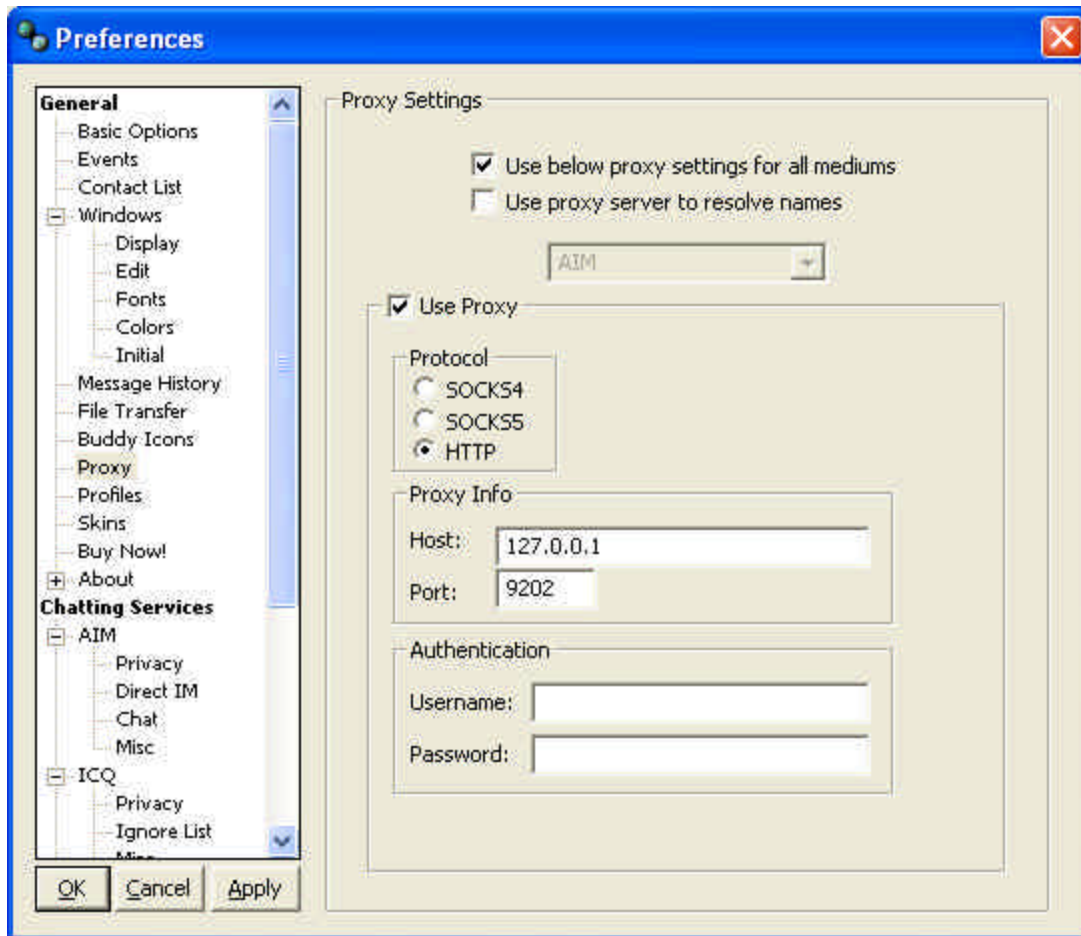


Figure 1-5

- E. Click on **OK,** and then restart the Trillian application.

Trillian is now configured to connect using the SatDirect Software.