

Configuring Winamp3 Media Player with SatDirect

Problem: When trying to stream with Winamp3 Media Player, the download is coming through the dial-up connection. How do I stream using the satellite connection?

Winamp3 is a popular MP3/media player. Because SatDirect is a proxy client, the proxy configuration in Winamp3 will need to be modified for streams to come through the satellite. **NOTE: This document shows how to configure the latest version of Winamp, Winamp3. You can download this version at the Winamp site, www.winamp.com.**

Troubleshooting Step 1 : Inserting the Proxy Settings into Winamp3

- A. Open up your Winamp3 software. You should see a screen similar to Figure 1-1.



FIGURE 1-1

- B. Right click on the main Winamp window, and go to **OPTIONS**, and then **PREFERENCES**, as shown in Figure 1-2.

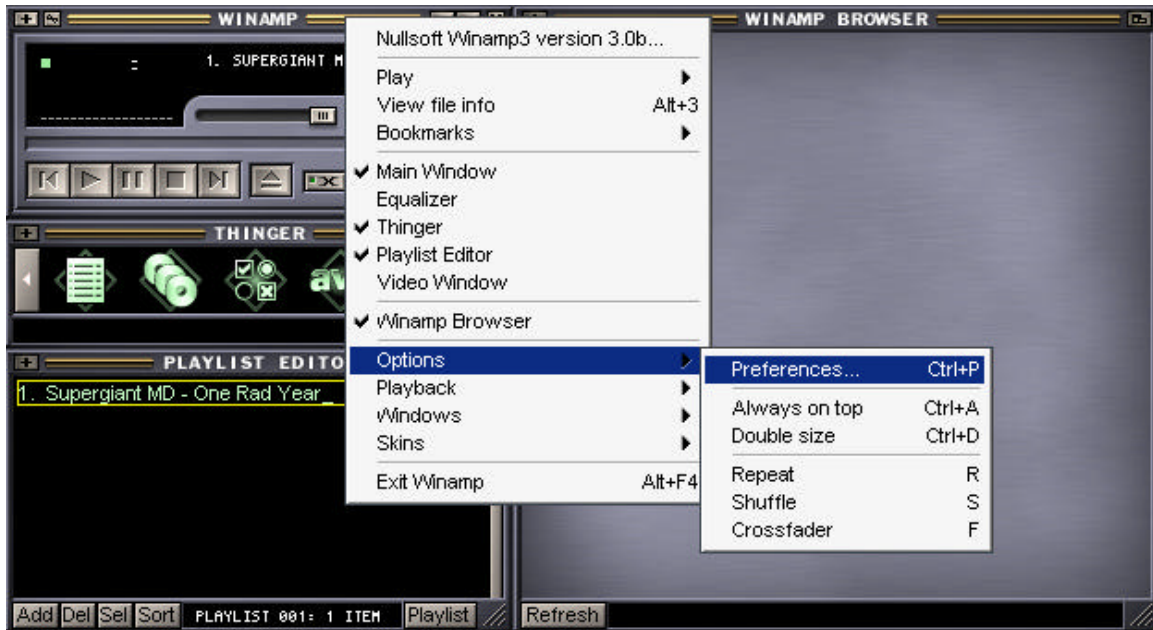


FIGURE 1-2

- C. On the left side of the Preferences screen, click on the word **INTERNET**. You should now see the screen shown in Figure 1-3.

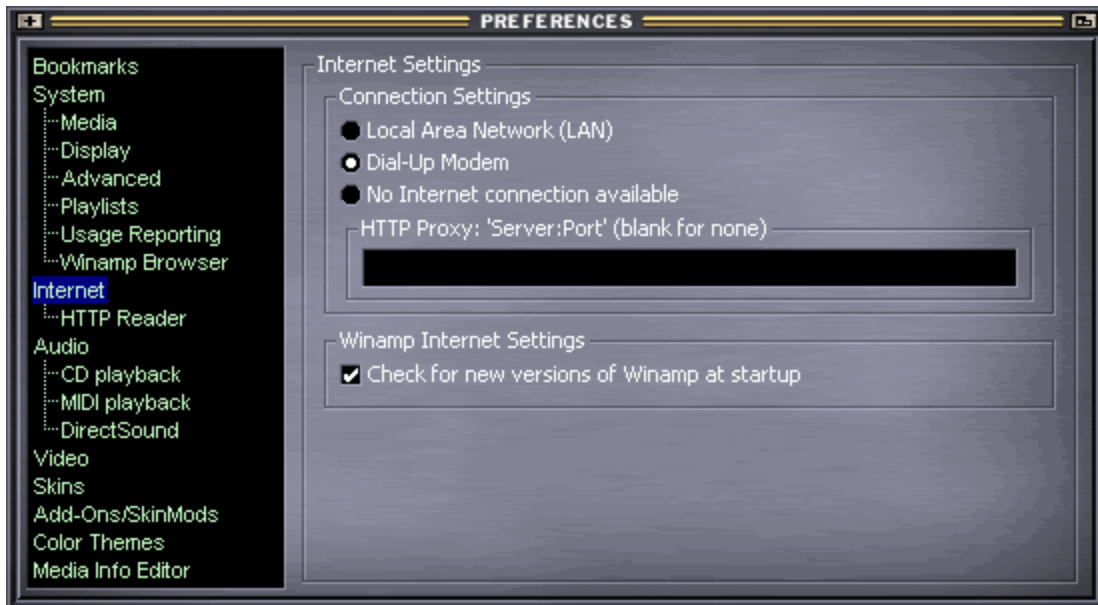


FIGURE 1-3

- D. On the right side of the screen, in the box under **HTTP Proxy:** 'Server:Port', enter in the following : **127.0.0.1:9202** . Make sure that you hit the "Enter" key after typing in the IP address and port information.

NOTE: Failing to hit the “Enter” key will cause Winamp3 to forget this setting when the Preferences window is closed.

You are now configured to stream through the satellite using Winamp3.